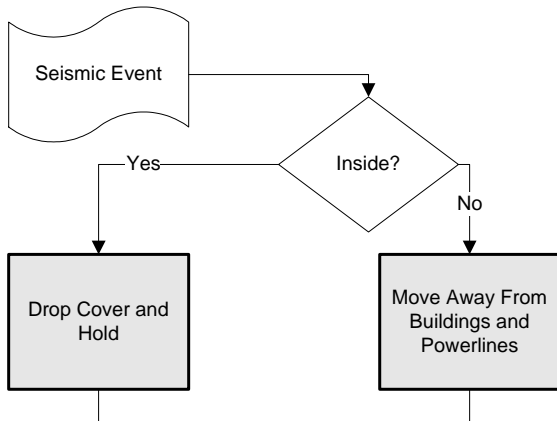


# Emergency Warden Initial Response and Actions During a Seismic Event



## Indoors

When you feel an earthquake, DROP and COVER under a desk or sturdy table. Stay away from windows, bookcases, file cabinets, heavy mirrors, hanging plants, and other objects that could fall. HOLD onto the desk or table. If it moves, move with it. DO NOT RUN! Stay where you are and, "DROP, COVER, and HOLD."

If you do not have anything to take cover under, DROP against an inside wall and COVER your head and neck with your arms.

## Outdoors

If you are outdoors, move to a clear area away from trees, signs, buildings, or downed electrical wires and poles.

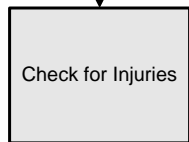
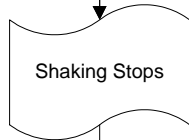
## After the Earthquake

Check yourself and those around you for injuries.

Evaluate your area for safety. Stay inside unless hazards are present.

Be prepared for aftershocks

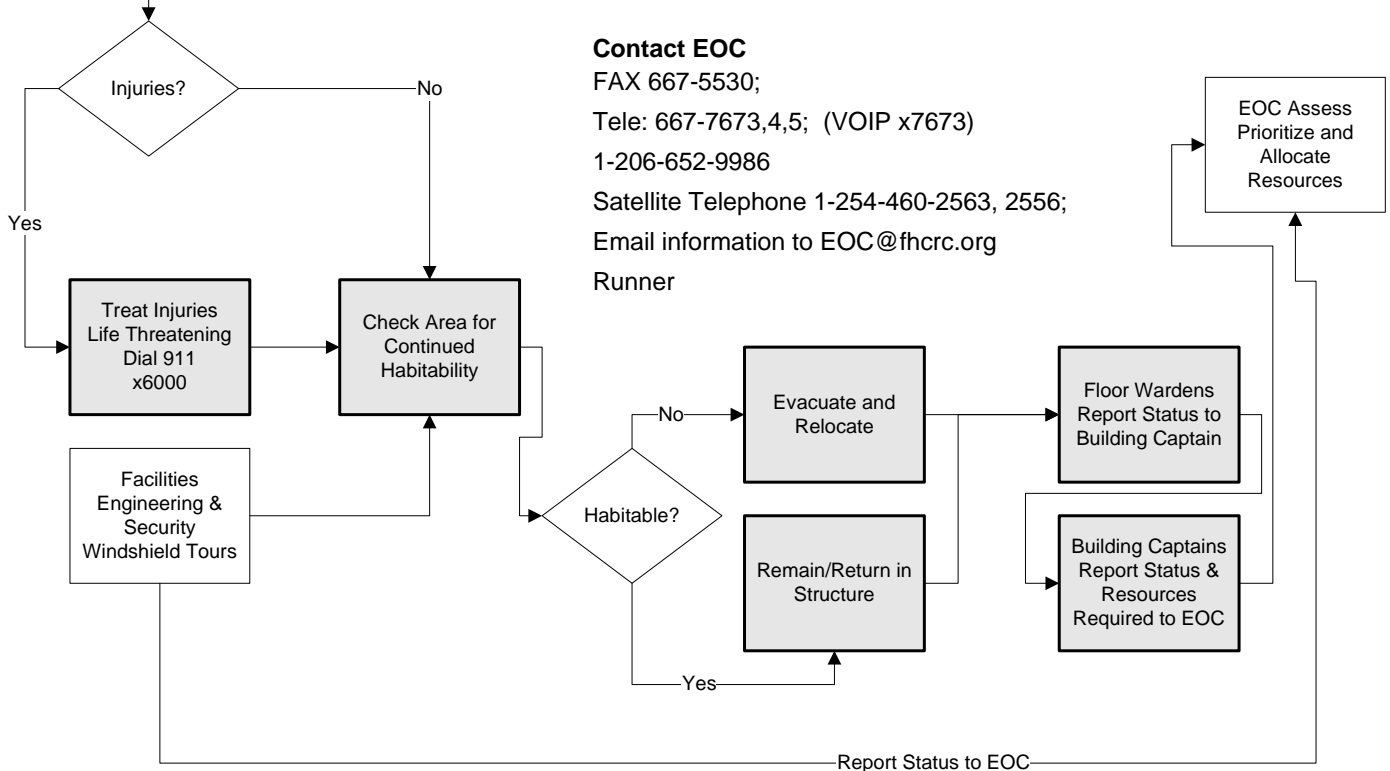
Use the phone only to report a life threatening emergency



## Post Event Injury/Damage Assessment Report

Floor Emergency Wardens Report Status to Building Captain

Building Captains Report Status to Emergency Operations Center via attached Post Event Damage Assessment Form



## Contact EOC

FAX 667-5530;

Tele: 667-7673,4,5; (VOIP x7673)

1-206-652-9986

Satellite Telephone 1-254-460-2563, 2556;

Email information to [EOC@fhcrc.org](mailto:EOC@fhcrc.org)

Runner