

Table 1.1 Days to Vaginal Cancer Mortality in Rats

Group 1	143,	164,	188,	188,	190,	192,	206,	209,	213,	216,	220
	227,	230,	234,	246,	265,	304,	216*,	244*			
Group 2	142,	156,	163,	198,	205,	232,	232,	233,	233,	233,	233
	239,	240,	261,	280,	280,	296,	296,	323,	204*,	344*	

Source: Pike (1966).

\* These four items are right censored.

Table 1.4 Kaplan-Meier Survivor Function Estimates for Carcinogenesis Data

Group 1					Group 2				
$t_i$	$d_i$	$n_i$	$\hat{F}(t_i)$	$\widehat{\text{var}}(\hat{F})$	$t_i$	$d_i$	$n_i$	$\hat{F}(t_i)$	$\widehat{\text{var}}(\hat{F})$
143	1	19	0.947	0.00262	142	1	21	0.952	0.00216
164	1	18	0.895	0.00496	156	1	20	0.905	0.00410
188	2	17	0.789	0.00875	163	1	19	0.857	0.00583
190	1	15	0.737	0.01021	198	1	18	0.810	0.00734
192	1	14	0.684	0.01137	205	1	16	0.759	0.00885
206	1	13	0.632	0.01225	232	2	15	0.658	0.01109
209	1	12	0.579	0.01283	233	4	13	0.455	0.01240
213	1	11	0.526	0.01312	239	1	9	0.405	0.01208
216	1	10	0.474	0.01312	240	1	8	0.345	0.01148
220	1	8	0.414	0.01311	261	1	7	0.304	0.01067
227	1	7	0.355	0.01264	280	2	6	0.202	0.00814
230	1	6	0.296	0.01170	296	2	4	0.101	0.00459
234	1	5	0.237	0.01029	323	1	2	0.051	0.00243
246	1	3	0.158	0.00873					
265	1	2	0.079	0.00530					
304	1	1	0.000						

 $(\hat{F})$ 

1216  
1410  
1583  
1734  
1885  
1109  
1240  
1208  
1148  
1067  
0814  
0459  
0243

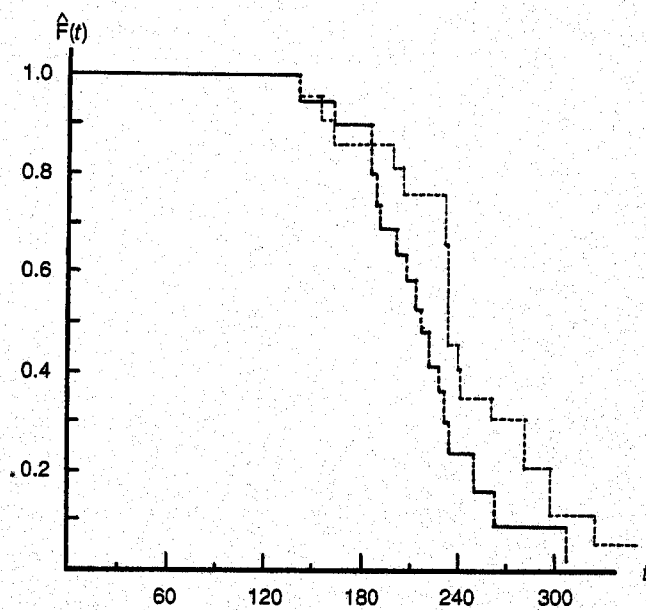


Figure 1.2 Kaplan-Meier survivor functions estimates for carcinogenesis data: solid line, group 1; dashed line, group 2.